

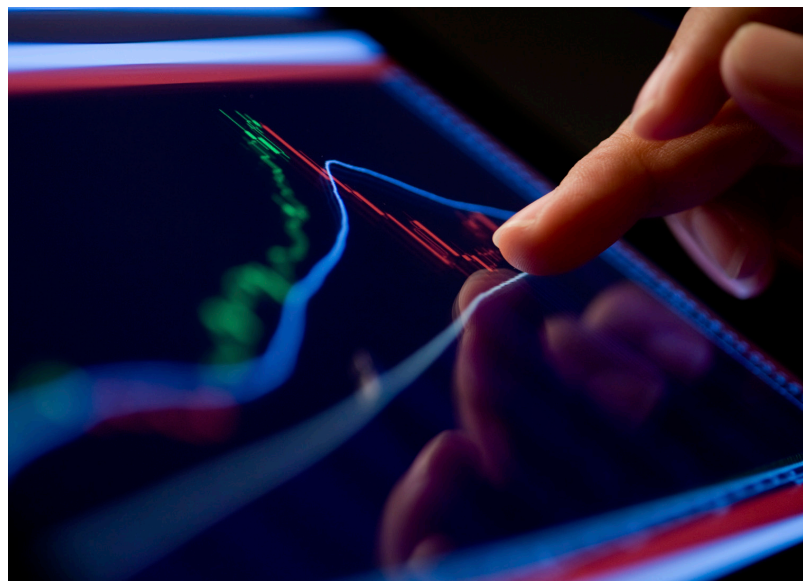
Reliable compact  
power meter



EMU4 Series power meters provides electrical metering for machine panels, power distribution panels, lighting panels, renewable energy, OEM applications, facility or building automation loads. EMU4 with data logging option can store up to 620 days of power metering data.

### Key Features:

- Easy on-board menu configuration
- Native Modbus RTU communication and optional CC-Link support
- Direct 480V WYE connectivity option, use standard potential transformer for loads that have higher voltage
- Real-time power quality information
- Pulse count option for KYZ input signal from gas, water, or electric meters. Contact output pulse for energy kWh.
- Local data logging option



Flexible and compact Din Rail power – providing you with real time power quality information for preventative maintenance.

## Frequently Asked Questions

### ■ What is a typical application for EMU4 Series power meters?

EMU4 Din Rail power meters are good fit for existing machine panels, sub metering panels, facility or building automation loads. EMU4 meter with its compact design with Din rail and native Modbus RTU communication makes it a great fit for any panel to provide energy intelligence at low cost. EMU4 meters can be integrated with Mitsubishi Electric or any third party automation platform.

### ■ What is the difference between EMU4-BD1-MB (basic) model vs EMU4-HD1-MB (advanced) Model?

EMU4-BD1-MB model has basic voltage, current, frequency, power, demand and energy metering for single phase, or 3 phase 3 wires system. EMU4-HD1-MB has one contact input and one contact output, meters up to 13th harmonics, CO2 calculation factor, operating time in addition to basic metering. EMU4-HD1-MB can meter 4 wires WYE (480V direct voltage sensing) as well as single phase or 3 phase 3 wires system.

### ■ What is the value of on-board buttons and display?

The EMU4 models allow easy configuration through the on board buttons. With the display on product provides the mean of configuration and viewing the real time metering that can be used for troubleshooting in the panel.

### ■ What type of current sensors is required for EMU4 models?

For any power metering application, current sensors/current transformers are required. EMU4 models require EMU-CTxxx current sensors. EMU-CTs are available in 50A, 100A, 250A, 400A, and 600A (Amps).

Two EMU-CTs are required for 3-phase 3-wire circuit and three EMU-CTs are required for a 4-wire WYE circuit.

### ■ What types of data logging and communication options are available with these units?

Data logging option allows you to log data in SD. Different logging rate options are available from second, minutes to hourly resolution. When logging data at hourly rate, EMU4 can store up to 620 days of data for up to 10 metering points. Data is logged in csv format and can be opened with standard Microsoft Excel.

Modbus RTU is the native communication. CC-Link standard is also available as option.

For Modbus TCP, EtherNet/IP, BACnet, ProfiNet or other communication request, please contact your regional sales representative.



### for a greener tomorrow

Eco Changes is the Mitsubishi Electric Group's environmental statement, and expresses the Group's stance on environmental management. Through a wide range of businesses, we are helping contribute to the realization of a sustainable society.

All registered trademarks, service marks and/or trademarks used throughout this document, without exception, are the legal property of their respective owners.

